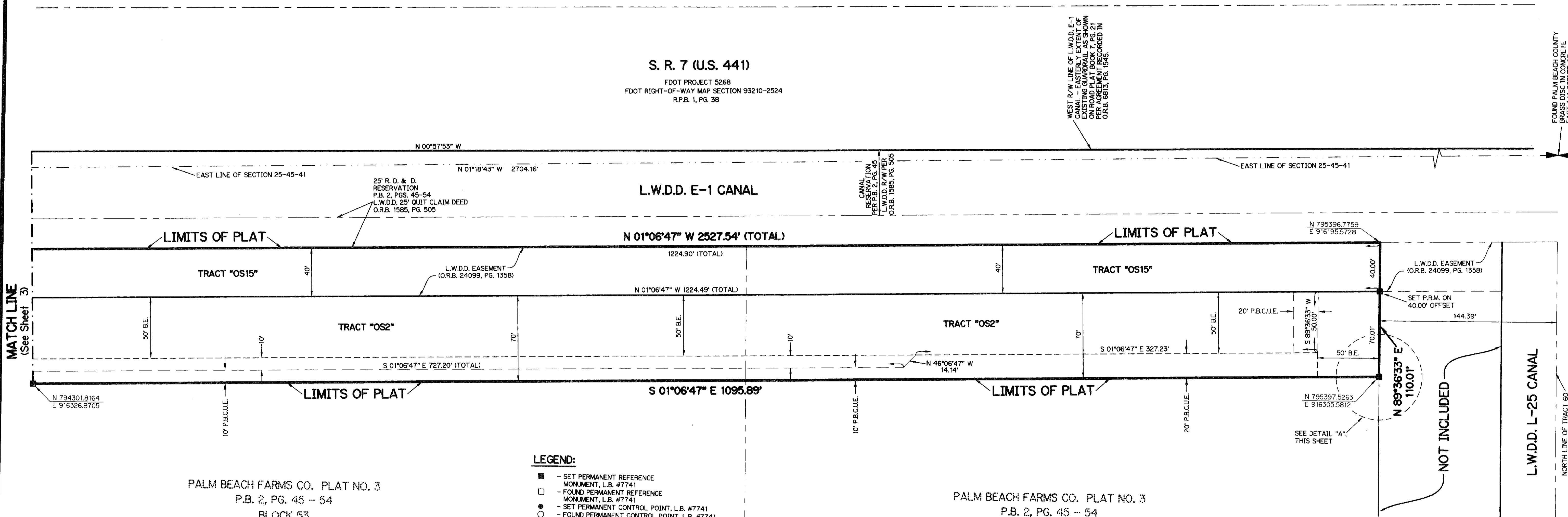
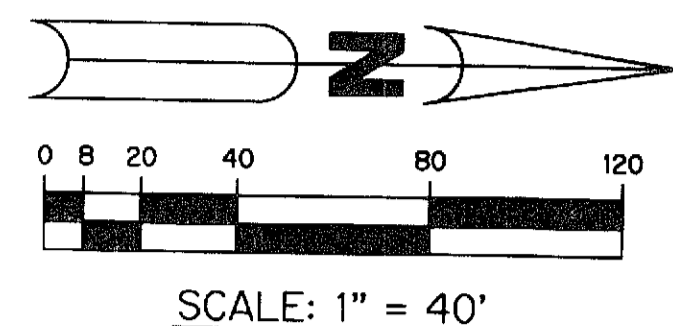


# LYONS WEST AGR P.U.D. - PLAT SIX

BEING A REPLAT OF A PORTION OF TRACTS 60, 61, 83 THROUGH 86 AND A PORTION OF A ROAD, DITCH AND DYKE RESERVATION 30 FEET IN WIDTH, ALL LYING WITHIN BLOCK 53, PALM BEACH FARMS CO. PLAT NO. 3, AS RECORDED IN PLAT BOOK 2, PAGES 45 THROUGH 54, ALL OF THE PUBLIC RECORDS OF PALM BEACH COUNTY, FLORIDA LYING IN SECTIONS 30 & 31, TOWNSHIP 45 SOUTH, RANGE 42 EAST

SHEET 8 OF 8 DECEMBER, 2010

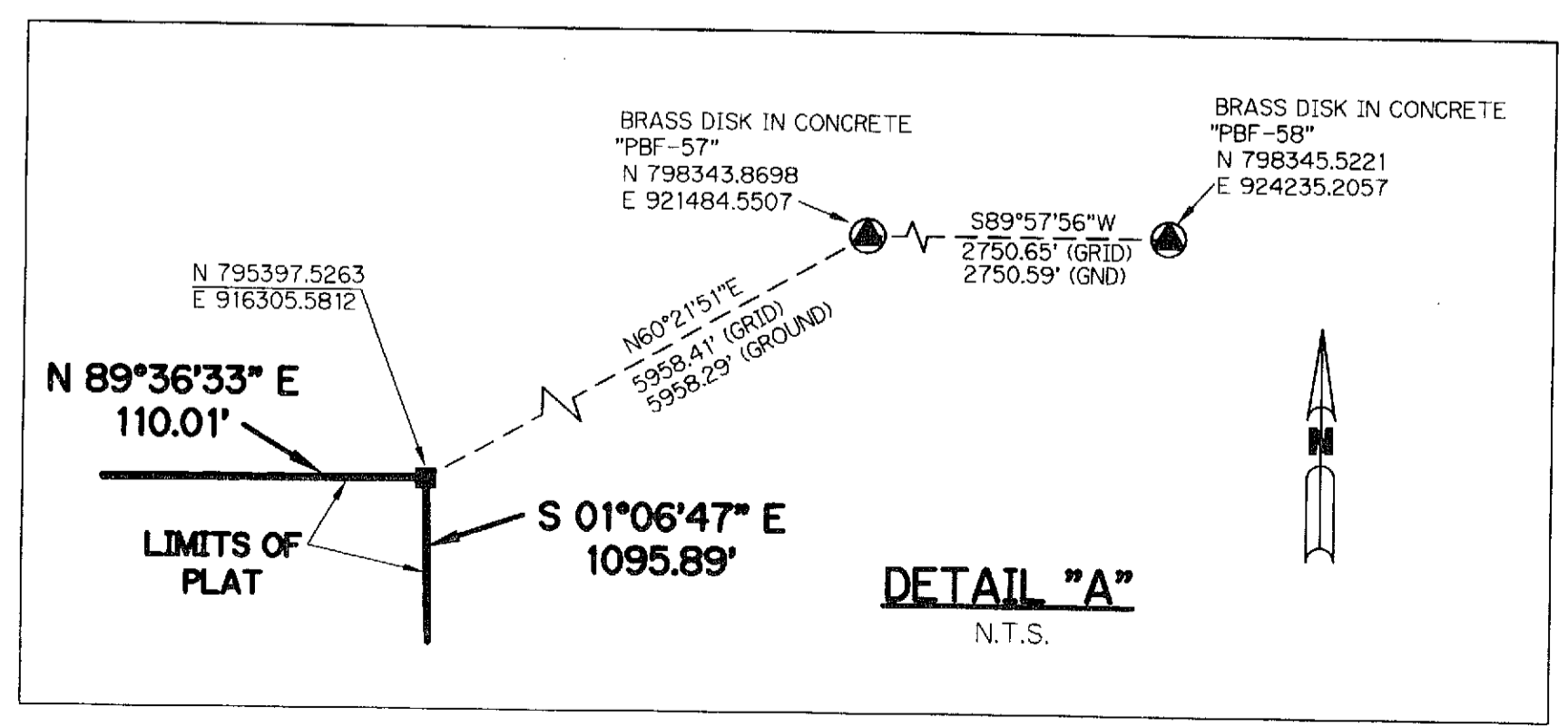
THIS INSTRUMENT PREPARED BY  
PERRY C. WHITE, P.S.M. 4213, STATE OF FLORIDA  
SAND & HILLS SURVEYING, INC.  
8461 LAKE WORTH ROAD, SUITE 410  
LAKE WORTH, FLORIDA 33467  
LB-7741



PALM BEACH FARMS CO. PLAT NO. 3  
P.B. 2, PG. 45 - 54  
BLOCK 53  
TRACT 61

PALM BEACH FARMS CO. PLAT NO. 3  
P.B. 2, PG. 45 - 54  
BLOCK 53  
TRACT 60

- LEGEND:**
- - SET PERMANENT REFERENCE MONUMENT, L.B. #7741
  - - FOUND PERMANENT REFERENCE MONUMENT, L.B. #7741
  - - SET PERMANENT CONTROL POINT, L.B. #7741
  - - FOUND PERMANENT CONTROL POINT, L.B. #7741
  - Δ - DELTA ANGLE
  - B.E. - BUFFER EASEMENT
  - CB - CHORD BEARING
  - CH - CHORD DISTANCE
  - CL - CENTERLINE
  - D.B. - DEED BOOK
  - D.E. - DRAINAGE EASEMENT
  - F.P.L. - FLORIDA POWER & LIGHT
  - G.E. - GRADING EASEMENT
  - L - ARC LENGTH
  - L.A.E. - LIMITED ACCESS EASEMENT
  - L.M.A.E. - LAKE MAINTENANCE ACCESS EASEMENT
  - L.M.E. - LAKE MAINTENANCE EASEMENT
  - L.W.D.D. - LAKE WORTH DRAINAGE DISTRICT
  - N.R. - NOT RADIAL
  - N.T.S. - NOT TO SCALE
  - O.R.B. - OFFICIAL RECORD BOOK
  - O.E. - OVERHANG EASEMENT
  - P.B.C.U.E. - PALM BEACH COUNTY UTILITY EASEMENT
  - P.B. - PLAT BOOK
  - P.C.P. - PERMANENT CONTROL POINT
  - P.G.S. - PAGES
  - P.O.B. - POINT OF BEGINNING
  - P.O.C. - POINT OF COMMENCEMENT
  - P.S.M. - PROFESSIONAL SURVEYOR AND MAPPER
  - R - RADIUS
  - R/W - RIGHT-OF-WAY
  - R.D. & D. - ROAD, DYKE AND DITCH RESERVATION
  - S.T. - SURVEY TIE
  - U.E. - UTILITY EASEMENT
- N 1000000.0000 - DENOTES STATE PLANE COORDINATES  
E 1000000.0000



**NOTE:**  
COORDINATES SHOWN ON THE GEODETIC CONTROL MEET OR EXCEED THE LOCAL ACCURACY REQUIREMENTS OF A 2 CENTIMETER GEODETIC CONTROL SURVEY. COORDINATES SHOWN ARE GRID COORDINATES DATUM = NAD 83 (1990 ADJUSTMENT) AS READJUSTED BY PALM BEACH COUNTY IN 1998.  
ZONE = FLORIDA EAST ZONE  
LINEAR UNIT = U.S. SURVEY FEET  
COORDINATE SYSTEM = 1983 STATE PLANE TRANSVERSE MERCATOR PROJECTION  
ALL DISTANCES ARE GROUND  
SCALE FACTOR = 1.0000207  
PLAT BEARING = GRID BEARING

